

GREEN CHAMPIONS

HOW TO EMBED SUSTAINABILITY IN YOUR LABORATORY INDUCTION PROGRAMME

Every medical laboratory that is UKAS accredited to the ISO 15189 standards must have an effective induction programme. Induction is a key part of helping new employees become familiar with their new department, employer and role.

In addition to this, the induction process is an opportunity to make new employees feel welcome and to learn about the culture and values of your organisation and department.

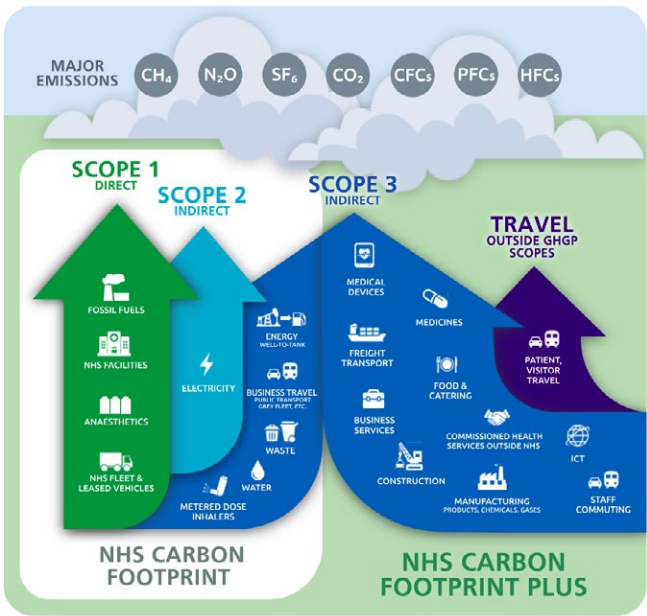
NHS England have committed to achieving net zero for the emissions it controls directly (the NHS Carbon Footprint) by 2040, with an ambition to reach an 80% reduction by 2028 to 2032. For the emissions influenced by the NHS (the NHS Carbon Footprint plus), the target timescale is 2045, with an ambition to reach an 80% reduction by 2036 to 2039 ([Greener NHS »](#), [Delivering a net zero NHS](#)). Similar targets are in place



ALISON JONES

Consultant clinical biochemist,
SHYPS

With thanks to Rob Shorten
(Lancaster Teaching Hospitals)
and Jennifer Collins and
Joanne Hall (Newcastle Hospitals
NHS Foundation Trust)



NHS England Scope 1, 2 and 3 emissions

for NHS Scotland ([NHS Scotland climate emergency and sustainability strategy: 2022-2026 - gov.scot](#)) and NHS Wales ([NHS Wales Decarbonisation Strategic Delivery Plan](#)). The Northern Ireland Climate Change Act (2022) ([Introduction to the Northern Ireland Climate Change Act | Climate NI](#)) contains a legal requirement for all public bodies, including health trusts, in Northern Ireland to ensure that targets and carbon budgets are met.

The challenge is huge, but every individual member of staff can play their part in making a difference. NHS England has over 1.5 million employees, so even small changes will add up if adopted by enough people. By including sustainability in your departmental (or even Trust) induction programme, you can show staff that sustainability is embedded as a core value of the NHS, and encourage your teams to consider how their actions can influence climate change.

Below are some suggestions for how you can incorporate sustainability into your induction programme:

- Provide a short introduction to explain why sustainability is important, e.g.
 - Climate change poses a major threat to our health as well as our planet. The environment is changing, this change is accelerating and presents direct and immediate consequences for our patients, the public and the NHS.
 - The NHS aims to be the world's first net zero national health service by 2040.
 - To achieve this, all areas of the NHS need to engage in sustainability initiatives and activities to reduce waste and energy consumption.
 - Laboratories are extremely energy and resource intensive. Data suggests that laboratories typically consume 3-10 times more energy than non-lab areas.

- Highlight day-to-day things, e.g.

Things you SHOULD be doing:

Every individual has a role to play!

Click on the points below to pop-up further information.

 SWITCH IT OFF

 PCs

 Monitors

 Lights

 Laboratory equipment



ABOUT THIS DOCUMENT

This preview includes low quality unlicensed images for demonstration purposes only.

- Provide information about projects already done (e.g. turn off lights/traffic lights/screen savers/recycling and waste) and those in progress.
- Introduce your Green Champions and explain how to get involved. Highlight existing lab-resources such as sustainability notice boards, Green Champions e-mail groups or MS Teams groups.

SHYPS Green Champions

The SHYPS Green Champions are a group of volunteers from each discipline and SHYPS site with an interest in identifying and promoting sustainable actions and change. New members of staff are ideally placed to notice practices that are inefficient or wasteful and to introduce new ideas. Anyone can be a Green Champion!

Click on the button below to learn more about the SHYPS Green Champions.

SHYPS Green
Champions

Become a SHYPS
Green Champion



ABOUT THIS DOCUMENT

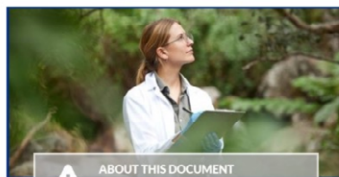
This preview includes low quality unlicensed images for demonstration purposes only.

- Utilise existing resources: NHS England, in conjunction with the Centre for Sustainable Healthcare, have produced an e-learning module called 'Building a Net Zero NHS', which is accessible to all NHS staff. ([Environmentally Sustainable Healthcare - elearning for healthcare](#))
- Provide links to other resources, e.g.
 - [Greener NHS](#)
 - [Greener NHS » Delivering a net zero NHS](#)
 - [Greener NHS » National ambition](#)
 - [Greener NHS » Take action](#)

Sustainability eLearning

Click the button below to complete the short eLearning module on York Learning Hub called "Building a Net Zero NHS".

Building a Net Zero NHS eLearning



ABOUT THIS DOCUMENT
This preview includes low quality uncensored images for demonstration purposes only.

Sustainability

SHYPS is committed to identifying opportunities to support the NHS's net zero goal.

Please click on the buttons below to read about the traffic light sticker system and Greener NHS and its goals.

Traffic Light Sticker System

Greener NHS

National Ambition

Net Zero NHS

Take Action

ABOUT THIS DOCUMENT
This preview includes low quality uncensored images for demonstration purposes only.

Remember to keep it brief. Induction programmes contain a lot of information. I would suggest just one or two slides in your induction package which will let your new starter know that sustainability is important in your department, list a few key things that they can do day-to-day and signpost them to further information and/or your Green Champions.

If you have any suggestions or examples about how to incorporate sustainability into your induction programme, then please let the LabMed Green Champions know, at [Green Champions](#).

Images courtesy of the SHYPS Training Team