

## NHS – The bigger picture

Helen Johnstone

Epsom & St Helier University Hospitals

### Overview of presentation

- High-level overview of the NHS
  - Evolution
  - Key strategic developments post-COVID era.
  - Set stage for next two presenters

## The NHS & The Constitution



## NHS Constitution – for England

Updated 14<sup>th</sup> October 2015 – 10y renewal

### 7 Key principles:

1. Available to all
2. Based on Clinical need not ability to pay
3. Aspire to highest standards of excellence & professionalism
4. Patient is at heart of everything NHS does
5. NHS works across organisational boundaries
6. Committed to provide best value for money
7. NHS is accountable to public, communities and patients that it serves

- Patient information, involvement & feedback
- duty of candour; complaints
- dignity, respect, compassion & integrated care

## NHS - history

Created 5<sup>th</sup> July 1948 by  
Health Secretary  
Aneurin Bevan 1952

## NHS Headline Activity

Employs 1.6 million people

NHS Key Statistics, England. House of Commons Briefing paper, 31 May 2019

## NHS Headline activity

**Cancer waiting times  
2023/24 – 3.1million Urg GP  
referrals  
+200,000 every year**

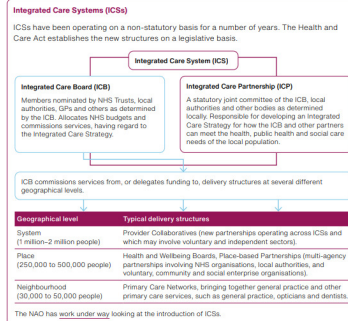
**Cons appointment within 2/52  
– target 93% not met since  
Oct 2018 (23/24 72%)**

**First Rx for cancer 630K  
patients 90% (target 96%  
within 31days)**

<https://www.england.nhs.uk/statistics/statistical-work-areas/cancer-waiting-times/> Accessed Aug 2024

## The Health and Care Act

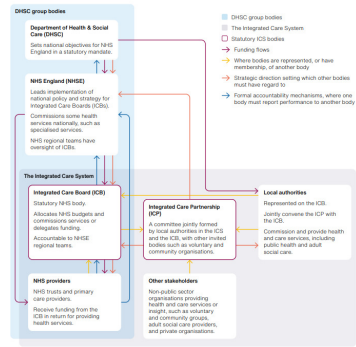
On 28 April 2022, the Health and Care Act received Royal Assent. It ushered in some of the biggest changes to the structure of the NHS in England for a decade. The main innovation is the introduction into statute of Integrated Care Boards and Integrated Care Partnerships, two key components of Integrated Care Systems.



## High level overview of the NHS

The key bodies and structures involved with Integrated Care Systems (ICSs)

ICSs bring together NHS organisations, local authorities, and other partners



## Providers & Commissioners of NHS services (England Aug 2024)

<b>220 General Acute Hospitals</b> <b>49 Specialist Hospitals</b>	<b>6925 GP practices</b> ↓ 20% April 2013	<b>42 Integrated Care Systems (ICSs)</b> Population size Av 1.46M (521K – 3.1M)
<b>50 Mental health trusts</b>	<b>853 profit &amp; not-for-profit independent sector organisations in 7,331 locations</b>	<b>7 CSU (NHS &amp; private) deliver support to CCG's</b>
<b>826 Community providers</b>	<b>11000 independent dental provider practices</b> 60,000 dental HCW	<b>15 Health Innovation Networks</b>
<b>10 ambulance trusts</b> 5 are FTs	<b>11414 active community Pharmacies</b>	

<http://www.nhsconfed.org/resources/key-statistics-on-the-nhs-> accessed August 2024

## Funding Flows and Accountability

How the Department spent its money in 2020-21

Revenue spending by the Department of Health & Social Care and its bodies, 2020-21

During 2020-21, the Department spent £193.4 billion, the vast majority of which was spent through its arms-length bodies and other parts of the health sector.

The largest recipient of Departmental funding was NHS England and, through it, NHS providers including hospital trusts.

NHS England funded hospital services, primary care and medicine costs both directly and via Clinical Commissioning Groups.

The Department also passed funding worth £8.5 billion to local authorities, both directly and via Public Health England. This does not include any funding local authorities received through the Better Care Fund, administered by NHS England.

The resource expenditure shown in this diagram includes the Department's additional expenditure due to the of Health & Social Care pandemic. This is covered in more detail on the next page.

Not visible in the diagram is the capital spending of the Department and its bodies, which amounted to an additional £12.7 billion during 2020-21, mainly spent on projects such as new equipment and the construction of new hospitals.

Notes:

1. Totals do not sum due to rounding.

2. Public Health England was replaced in October 2020 by the Health Security Agency and the Office for Health Improvement and Disparities, which is part of the Department.

Source: National Audit Office analysis of the published accounts of the Department and its bodies.

£193.4bn

£3.4bn

£3.4bn

£3.4bn

£3.4bn

£3.4bn

£3.4bn

£3.4bn

£3.4bn

£3.4bn

£3.4bn

£3.4bn

£3.4bn

£3.4bn

£3.4bn

£3.4bn

£3.4bn

£3.4bn

£3.4bn

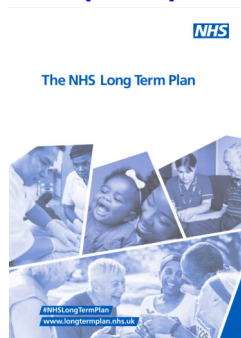
£3.4bn

£3.4bn

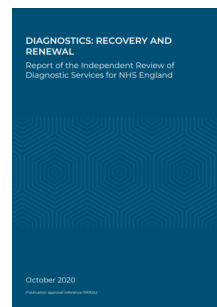
## Recent History and Key Strategic Developments

- Impact of COVID-19
  - NHS response to COVID-19
  - Significant structural and operational changes that emerged during and after the pandemic.
- Key Documents
  - NHS Long Term Plan (2019):
    - Service integration and digital transformation, positioning them as a foundation for the future.
  - Richard's Review (2020):
    - Focus on the need for improved diagnostic capacity and workforce enhancements.
  - NHS Workforce Plan (2023):
    - Addresses the workforce challenges and strategic planning efforts to secure the future of the NHS workforce.
- Understanding these strategic developments provides context for the structural changes within the NHS, which Helen will explore in more detail.

## The NHS Long Term Plan (2019)



## The Richards Review (2020)

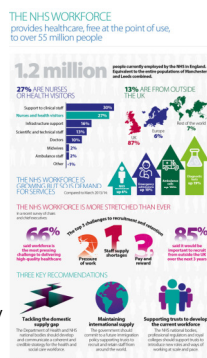


## The Long Term Workforce Plan (2023)

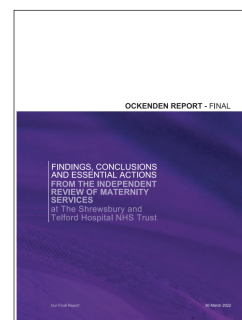
**NHS Long Term Workforce Plan**  
June 2023



- Increase training places for healthcare scientists by 13% to more than 850 places by 2028/29, putting us on the path to increase training places by more than 30% to over 1,000 places by 2031/32.



## The Ockenden Report (2022)



## COVID-19 Testing and Diagnostics Capabilities (2020-2021)

### Technical report on the COVID-19 pandemic in the UK

A technical report for future UK Chief Medical Officers, Government Chief Scientific Advisors, National Medical Directors and public health leaders in a pandemic.

Published 1 December 2020

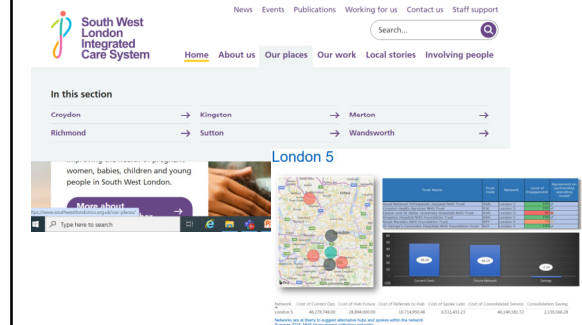
## Getting It Right First Time (GIRFT) - Pathology (2021)



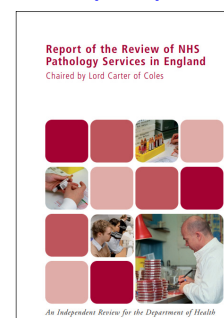
## NHS People Plan and People Promise (2020-2021)



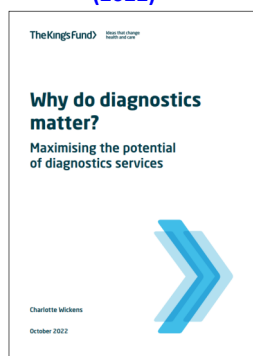
## ICSs and Pathology Networks (Post-2022)



## Lord Carter of Coles review (2008)



## The Kings Fund review – Why do diagnostics Matter? (2022)



## Strengths and Weaknesses of the NHS Structure

- Strategic Strengths and Weaknesses
  - NHS's ability to adapt to large-scale challenges like COVID-19, while also addressing ongoing issues such as integration with social care and regional disparities.
  - Role of Integration and ICSs
    - Strengths of ICSs in improving coordination and efficiency

## Future Challenges and Opportunities

- Funding constraints
- Workforce shortages
- Digital transformation
- Opportunities for innovation
  - Further integration within the NHS
  - Discussions on structures and commissioning.

Press release  
**Independent investigation ordered into state of NHS**

Professor Lord Darzi appointed to establish the state of the nation's health service.

From: Department of Health and Social Care, NHS England and The NHS New NHS Strategy 2024  
Published 11 July 2024

# Change.

Labour Party  
Manifesto 2024

[Read the Labour Party Manifesto](#)



## Conclusion

- Summary
  - NHS's overarching strategies and recent history
  - Consider how the strategic aspects discussed influences the structural and commissioning discussions in the next presentations
  - Questions?