

Embryologist's Elective Experience



Leeds
Maternity Care

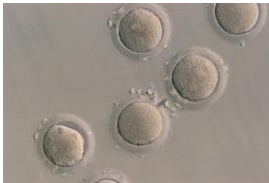


Leeds Centre for
Reproductive Medicine



Leeds Centre for
Women's Health

What I do...



Leeds
Maternity Care



Leeds Centre for
Reproductive Medicine



Leeds Centre for
Women's Health

Organising it...

1. Book the time off
2. Gather your contacts
3. Make contact with them (reminders)
4. Juggle dates
5. Book flights/accommodation
6. Research the venue

End of 2nd year/when
the weather is good

What I did...



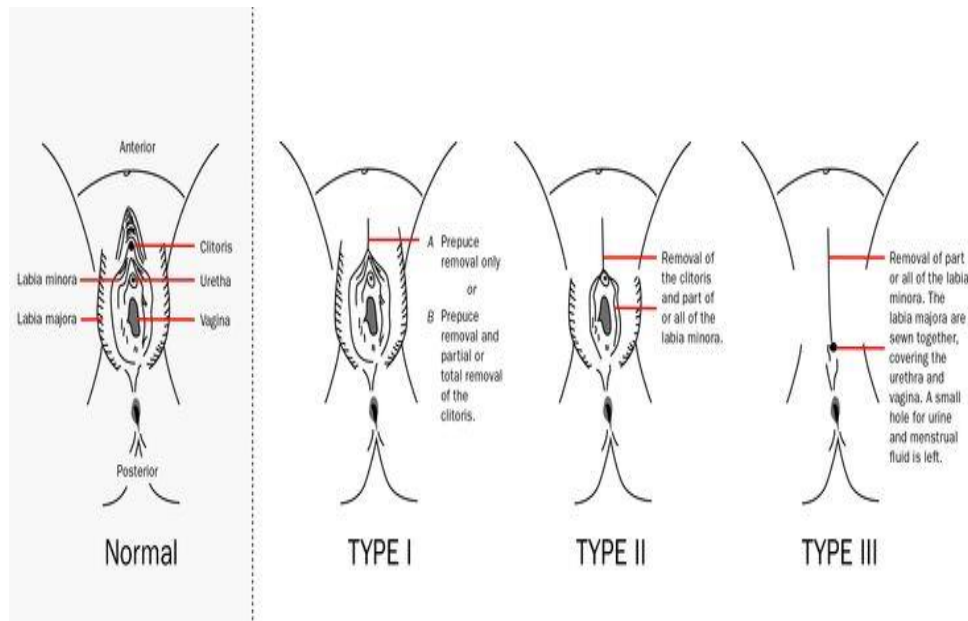
Twins Clinic

- Risks of multiple births
- 1st hand experience
- How other departments operate
- Staff contact



Female Genital Mutilation Clinic

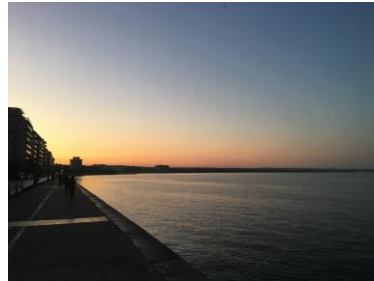
- Child safe guarding
- How to recognise
- Patient culture
- Local communities
- Staff contact





EmbryoClinic Thessaloniki

- Clinic abroad
- Law
- Regulation
- Networking
- Future collaboration
- Staff contact



Leeds
Maternity Care



Leeds Centre for
Reproductive Medicine



Leeds Centre for
Women's Health



Clinic Visit- Dundee and Glasgow

- UK clinics differ greatly
- Collaboration
- Networking
- Technique- PGD, layout, staffing
- STP colleague

IVI Seville



- Clinic abroad
- Gold standard
- Private
- Difficult to access
- Lots of technology



Leeds
Maternity Care



Leeds Centre for
Reproductive Medicine



Leeds Centre for
Women's Health

origio

Origio- Pharmaceuticals

- The Dark Side
- Shadow sales representative
- Visits to UK clinics
- Networking
- Experience in another field
- Staff contact



Competencies...

- EL-C-1 Produce learning outcomes for the elective training period and link these to Good Scientific Practice.
- EL-C-2 Write a report of your elective training that includes your learning outcomes (mapped to Good Scientific Practice), a critical reflection on your experience and an action plan.
- EL-C-3 Plan, prepare and deliver an oral presentation that describes and reflects on the learning from your elective and shows how your experience will shape your future practice.

Professional Practice competencies

- PP1-C-2 Discuss personal values, principles and assumptions, emotions and prejudices, and how these may influence personal judgement and behaviour, and identify how you will practise in accordance with Good Scientific Practice.
- PP1-C-3 Communicate effectively with the public, services users and other healthcare professionals, adapting communication style and language to meet the needs of listeners.
- PP1-C-4 Give and receive feedback sensitively to or from a peer or colleague.
- PP1-C-10 Contribute to the education and training of colleagues.
- PP1-C-11 Take responsibility for your learning and demonstrate a commitment to continuing professional development.



Final tips...

- Be organised
- Who you know, not what you know
- Areas related to your specialism
- Areas of interest to you
- Don't be afraid
- Budget for it
- Network your bum off!



Leeds
Maternity Care



Leeds Centre for
Reproductive Medicine



Leeds Centre for
Women's Health